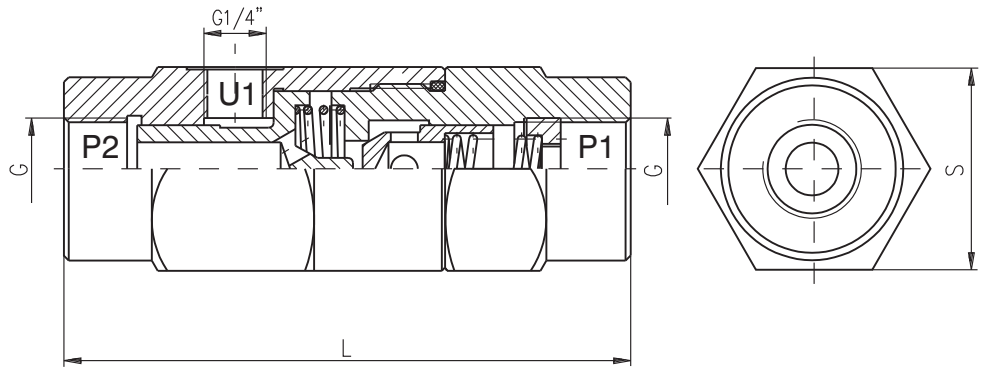
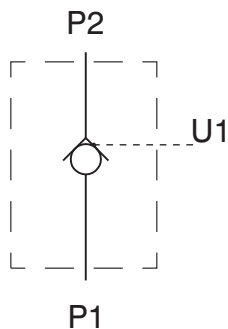


**DESCRIPTION**

✓ Check valves with hydraulic operation for pipe mounting-KOHU...-SA  
 ✓ Hydraulically operated check valve is designed to allow working liquid passing in one direction freely ( P<sub>2</sub> to P<sub>1</sub>), and at availability of control signal in the opposite direction (P<sub>1</sub> to P<sub>2</sub>). The valve ensures hydraulic "locking" of the hydraulic cylinders , i.e. providing their stability under load at neutral position of the directional control valve.

**DIMENSIONS**


TYPE	G	S	L
	mm		
KOHU 1/4-SA	G1/4"	36	98
KOHU 3/8-SA	G3/8"	40	106
KOHU 1/2-SA	G1/2"	42	118

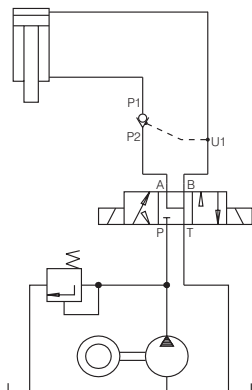
**SYMBOL**

**ORDERING CODE**

KOHU	***	-	SA
------	-----	---	----

Check valve with hydraulic operation

 Connecting threads: G1/4 - 1/4  
 G3/8 - 3/8  
 G1/2 - 1/2

Modification

**APPLICATIONS**

**TECHNICAL DATA**

Max. Pressure		320 bar
Rated flow	KOHU1/4-SA	12 l/min
	KOHU3/8-SA	20 l/min
	KOHU1/2-SA	45 l/min
Cracking pressure (for check valve)	for all types	0,5 bar
Area ratio (check valve seat/pilot piston)	KOHU1/4-SA	1/7
	KOHU3/8-SA	1/6
	KOHU1/2-SA	1/5
Working liquid-hydraulic oils with characteristics:		
-viscosity		10...400 cSt
-degree of filtration		0,025 mm
-temperature		-20...+80°C